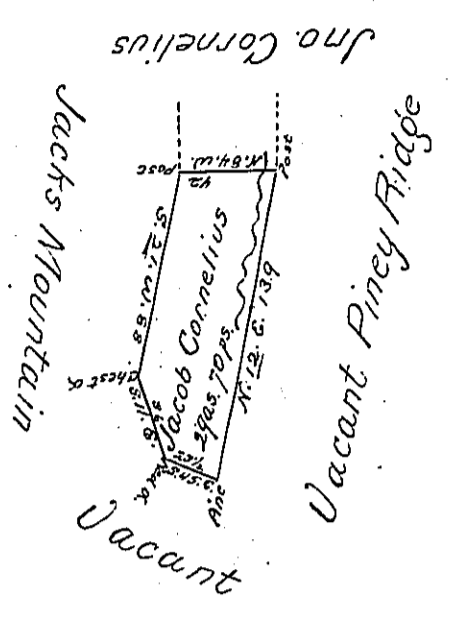


Pg 64



Situate in Shirley Township Huntingdon County about a mile from ~~the~~ the Lower End of Jack's Narrows containing 29as-70perches and the usual allowance for Roads Surveyed the 10th. day of November 1791 In pursuance of a Warrant dated the 25th. day of November 1786

John Canan D.S.

To Daniel Broadhead Esquire S.G.

IN TESTIMONY that the above is a copy of the original remaining on file in the Department of Internal Affairs of Pennsylvania, made conformably to an Act of Assembly approved the 16th day of February, 1833, I have hereunto set my Hand and caused the Seal of said Department to be affixed at Harrisburg, this second day of April 1901

James W. Fitter
Secretary of Internal Affairs.